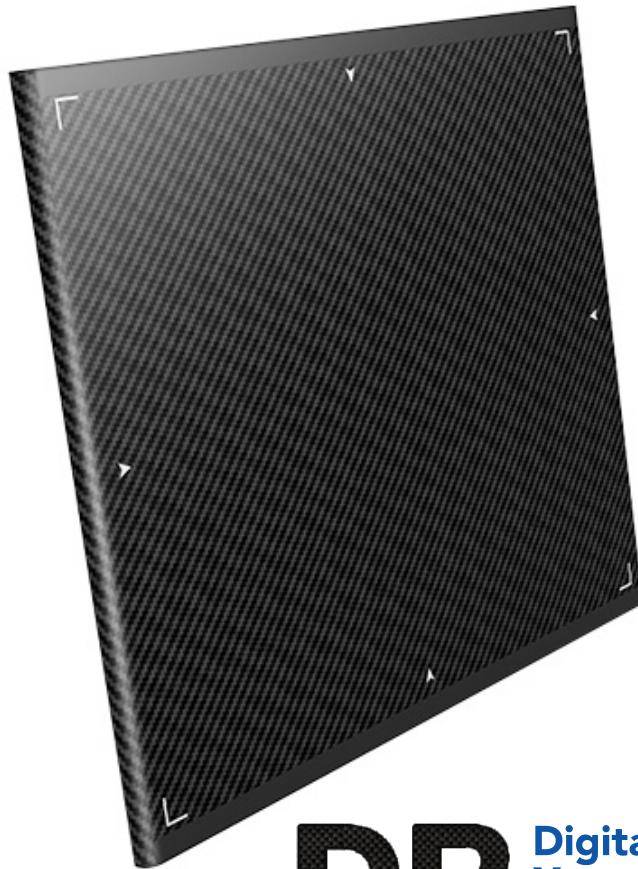
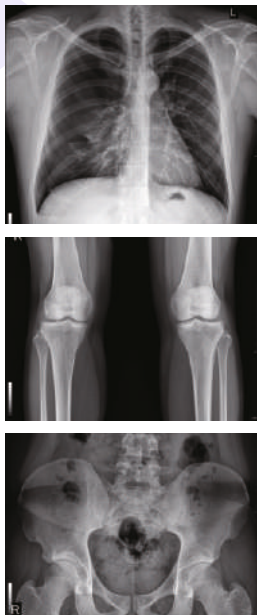
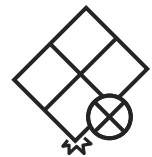


# RADX | Flat Panel Detector



HIGH TECHNOLOGIES FOR HIGH PERFORMANCE



DURABLE AND ERGONOMIC DESIGN FOR MOBILITY



USER FRIENDLY AND CONVENIENT FEATURES

## DR Digital X-ray Detector PLUG & PLAY

### Easy and Economic Upgrade to Digitize any X-ray equipment

- Portable, compact with removable carry handle
- 17" x 17" active area with 6 hrs battery backup
- Single DR system works with table, wall bucky and also portable with any X-ray system
- Wire / Wireless image transfer
- Fast acquisition within 3 seconds and continuous automatic acquisition using AED Plus technology
- In-built memory allows the detector to acquire and store images without computer



Low Dose IGZO TFT



Enhanced AED®



Extended Battery Life



Durable Design



Dust and Water Proof

# Flat Panel Detector - Technical Specifications

High sensitivity, high performance and high reliability flat-panel detector for imaging professionals

Application	General Radiography	
Conversion Screen (Scintillator)	Csl / GOS	
TFT Panel	IGZO TFT / a-Si TFT	
Pixel Pitch	140 µm	
Image Data (AD conversion)	Pure 16 bit	
Sensor Pixel	3,072 x 3,072	
Imaging Area	17x17 inch	
On-board Storage	< 100 Images	
Wired / Wireless communication	Gigabit Ethernet / IEEE 802.11ac	
Trigger Mode	High Sensitive 2xAED (Auto Exposure Detection)	
Calibration Mode	ACC (Auto Calibration Control) / Manual	
Durability	* Weight Bearing for whole surface	< 500 kg
	* Point Weight Bearing(4x4cm)	< 180 kg
	* Drop Test	Up to 100 cm
	Water & Dust Resistance	IP67
X-Ray Voltage Range	40~150kVp	
Voltage	AC 100~240V, 50/60Hz, DC18V 3.5A	
Environment	Storage: -10°C ~ 60°C, 10% ~ 90% RH (non-condensing) Operation: 10°C ~ 35°C, 20% ~ 75% RH (non-condensing)	
Battery Type	Lithium-Ion Polymer Battery	
Battery Life	6 Hours	
Dimensions	385 x 461 x 15 mm	
Weight (Without / With battery)	2.4 kg / 3.3 kg (dual battery)	

\* Weight Bearing and Drop test measured based on Non-Glass TFT

## Standard Accessories

Flat panel, Battery (2nos), Battery Charger, Software, WiFi router, Computer (i3, 10th Generation), Ink Tank Printer (Canon Pixma G1010)

## Optional

Dry X-ray laser printer



Dual Battery Charger



Dual Battery



Easy Grip & Removable Handle



Status Monitoring OLED

Since R&D is a continuous process, to make changes in product features, specifications, aesthetics and/or to discontinue the same at any time without notice or obligation



Certified ISO 9001:2015, EN ISO 13485:2016 company

RADX is division of

Recorders & Medicare Systems (P) Ltd.

Plot No. 11, HSIIDC IT Park, Sector 22, Panchkula - 134114, Haryana, India

Ph.: +91-172-2564196, 2565196, Toll Free: 1800-1200-767,

www.rmsindia.com, sales@rmsindia.com

Works: Plot No. 60 & 197, Industrial Area, Phase 1, Panchkula - 134113, Haryana, India



rev. 07/2023