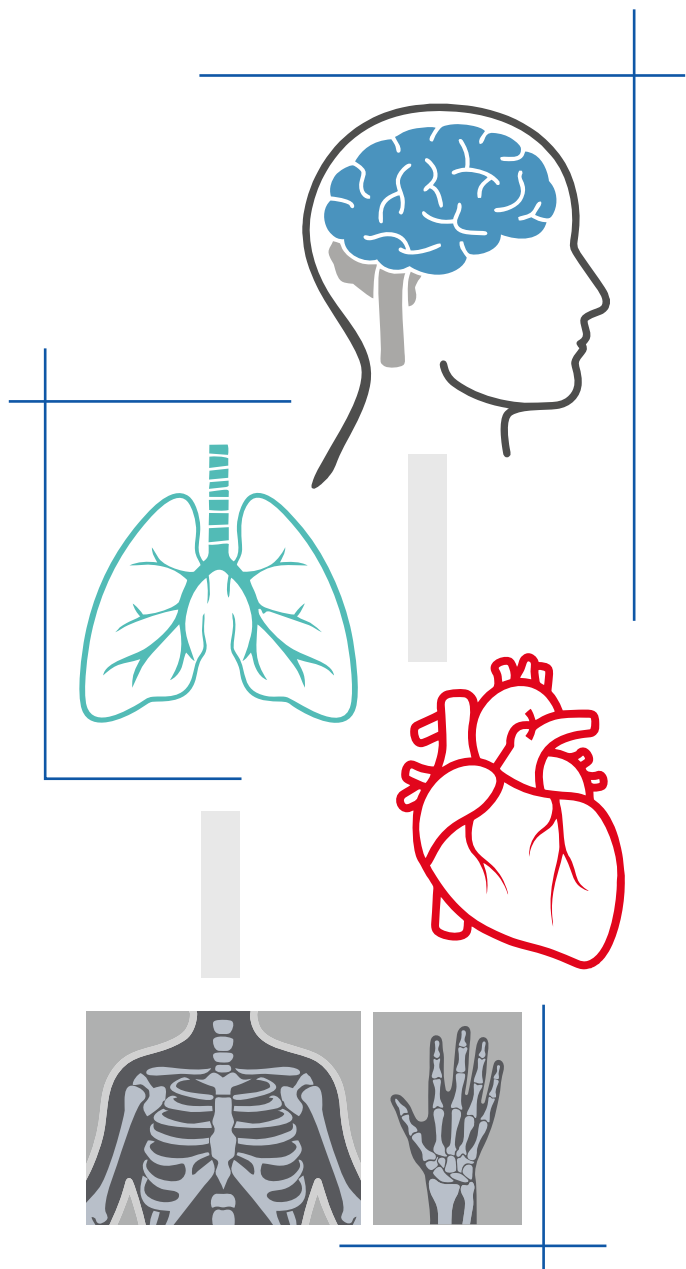




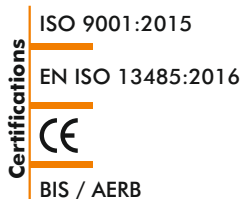
Leading with Innovation
Since 1975

- **Neurology**
EEG, EMG, PSG, TCD
- **Cardiology**
ECG, Holter, Stress Test System (TMT)
- **Patient Monitoring**
Pulse Oximeter, Multi-Parameter Monitor
- **Radiology**
Mobile and Fixed X-ray
- **Surgery**
HF C-arm Image Intensifier
- **Pulmonology**
Portable and PC-based Spirometer
- **In-Vitro Diagnostics**
Biochemistry, Hematology
- **Psychiatry / Physiology**
ECT, Bio-feedback, Polygraph, Physiograph
- **ENT / Audiology**
ENG, Audiometer, BERA, OAE, Tympanometer
- **Automated Healthcare**
Health Kiosk



PRODUCT CATALOGUE

India's Leading Medical Equipment Manufacturer



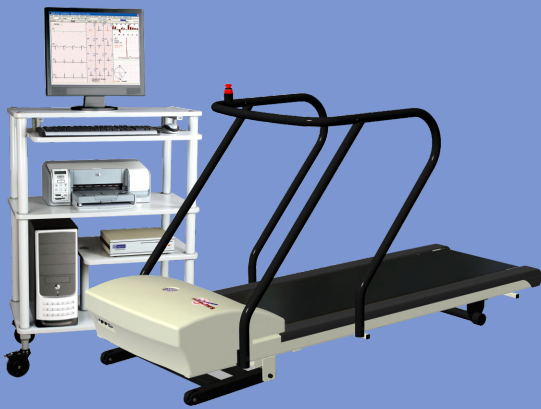
- Largest medical equipment sales and service network
- Serving the nation through our in-house design and manufacturing
- Reliable medical products to make healthcare affordable



3 Channel Resting ECG - Vesta 301i

- 12 Leads simultaneous acquisition
- Compact, light weight and portable
- Graphical color TFT for continuous ECG monitoring
- Measurements and interpretation
- 50 patient's result memory storage
- Paper out, charging, low battery and power on indication
- PC connectivity, USB storage and direct A4 ECG printing (optional)

Other Models	Vesta 101	Single Channel ECG with auto measurements
	Vesta 12C	12 Channel 10.1 inch color touch screen TFT display
	Vesta 12EC	12 Channel 8 inch color touch screen TFT display with keypad
	Vesta 121i	12 Channel PC based ECG with interpretation



Cardiac Stress Test System - Vega 204

- PC based cardiac workstation combines exercise and resting ECG
- Simultaneous acquisition and display of 12 leads raw ECG
- Full disclosure for beat-to-beat ECG analysis
- User programmable treadmill protocols
- Duke treadmill score
- Facility to send report via-email using web enabled software
- Equipped with high torque AC motor and digitally control drive

Other Model	Vega 301	Stress test system with wireless data acquisition
--------------------	----------	---



Patient Monitoring System - Phoebus P515

- ECG, SpO₂, NIBP, Respiration and Temperature
- 12.1" high resolution color graphical TFT display
- Adult, pediatric and neonatal monitoring
- Arrhythmia detection and graded alarm facility
- Graphical and tabular trend storage (720 hrs)
- Colour coded Visual and Audio alarms
- Real time ST segment analysis
- Drug Dose Calculation and Titration table
- Arrhythmia Detection with Alarm facility
- 4 hrs battery (Li-ion) backup

Other Models	Phoebus P512	ECG, SpO ₂ (Nonin), NIBP, Respiration and Temperature
	Phoebus P311	ECG, NIBP, SpO ₂ (3 Para Monitor)
	Phoebus P123	EtCO ₂ Monitor (Single Para Monitor)
	Phoebus P121	Pulse Oximeter (SpO ₂ - Single Para Monitor)



Spirometer - Helios 702

- High resolution color graphical TFT display
- Built-in thermal printer
- Storage for 2500 patient's data
- FVC, SVC and MVV tests
- Evaluation of 51 vital parameters with interpretation
- Paper out, charging, low battery and power on indication
- Facility to download data to PC
- Real time pulse rate and SpO₂ monitoring (optional)

Other Model	Helios 401	PC based spirometry system with advanced software
--------------------	------------	---



Portable EEG - Maximus 32

- Compact, portable and light weight
- 32 channel raw data acquisition
- USB powered with plug and play facility
- Artifact free recording in any environment
- Advanced brain mapping software
- Reports can be e-mailed or transferred across a network
- EEG synchronous video recording (optional)
- Real time pulse rate and SpO2 (Nonin) monitoring (optional)

Other Models	Maximus 24	24 Channel portable EEG system
	Super Spec 32	32 Channel PC based EEG system
	Brain View Plus 24	24 Channel PC based EEG system



EMG.NCV/EP - Salus 2C

- EMG replay with audio facility
- Auto latency/amplitude marking with user selectable measurements
- Nerve conduction studies
- Evoked potentials
- Left/Right side comparison on a single screen
- SEP, VEP, BERA, 40Hz, MLR, LLR and P-300

Other Models	Aleron 201	2 Channel PC based EMG system
	Aleron 401	4 Channel PC based EMG system
	Salus NCV	2 Channel Portable NCV.EMG system



PC Audiometer - Hermes

- Pure Tone Audiometry - Air Conduction and Bone Conduction
- Normal, pulsed, continuous and warble tone
- Air conduction and bone conduction audiometry
- Special Tests- ABLB, SISI, DECAY TEST, BEKESY
- Printer generated Audiograms
- Speech Audiometry
- Automatic Calculations for different tests

ENT/ Audiology	Hermes D	Portable Audiometer
	Gladius	PC based ENG (Electronystagmograph)
	Tympanica	Portable tympanometer
	Medulla 201	2 Channel BERA (ABR) system
	Medulla 202	2 Channel BERA (ABR) portable system



Biochemistry Analyzer - Analytica 705

- 48 direct test keys on board
- Calibration graph storage
- Create various test profiles
- High resolution color graphical TFT display
- On board key to rinse flow cell
- 1,00,000 test results storage
- Real time absorbance graph on screen
- LIS software for data management (optional)

IVD (In-vitro diagnostic)	Analytica 705i	Biochemistry analyzer with dry bath incubator
	Hestia 360	3 part differential automated Blood Cell Counter



Mobile High Frequency X-ray

HFX 3.5P	3.5 kW mobile X-ray, colour graphical TFT display, APR with soft touch keypad
HFX 3.5E	3.5 kW mobile X-ray, alphanumeric display with soft touch keypad



High Powered Fixed X-ray

MDX-500	500mA fixed machine with rotating anode X-ray tube
MDX-300	300mA fixed machine with rotating anode X-ray tube
MDX-100R	100mA fixed machine with rotating anode X-ray tube
MDX-100FS	100mA fixed machine with stationary anode X-ray tube



Health Kiosk

Standalone Health ATM

Health Kiosk 101	ECG, Pulse oximeter, BMI, Height, Blood pressure, Weight, Temperature, Digital stethoscope, Otoscope, Dermoscope, Glucose meter and Hemoglobin meter
Health Kiosk 201	ECG, Spirometer, Pulse oximeter, BMI, Height, Weight, Blood pressure, Temperature, Digital stethoscope, Otoscope, Dermoscope, Glucose meter, Hemoglobin meter, Biochemistry, Urine analyser and vision



HF Mobile C-arm

Corus 9	HF X-ray generator with stationary anode tube head, 9" I.I. with PC based image memory
Corus 9 HD	HF X-ray generator with stationary anode tube head, 9" I.I., 100 frames image memory with 29"/32" HD LED
Corus 9 HD 1K	HF X-ray generator with stationary anode tube head, 9" I.I., PC based image memory with 32" UHD LED

Since R&D is a continuous process, to make changes in product features, specifications, aesthetics and/or to discontinue the same at any time without notice or obligation



Certified ISO 9001:2015, EN ISO 13485:2016, BIS, AERB

**RADX is division of
Recorders & Medicare Systems (P) Ltd.**

Plot No. 11, HSIIDC IT Park, Sector 22, Panchkula - 134114, Haryana, INDIA
Ph.: +91-172-2564196, 2565196, Toll Free: 1800-1200-767,
www.rmsindia.com, sales@rmsindia.com

Works: Plot No. 197, Industrial Area, Phase 1, Panchkula - 134113, Haryana, INDIA