



Ecton
ECT MACHINE



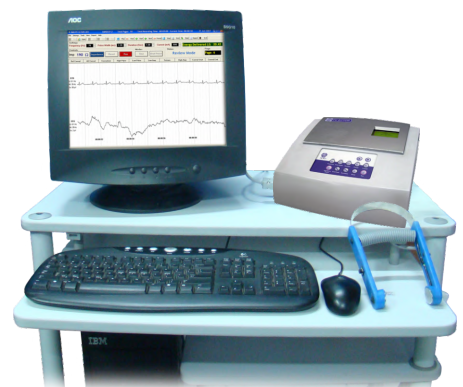
ELECTROCONVULSIVE THERAPY

ECTON Features-

- Portable and Light weight
- Alphanumeric LCD display
- Easy to clean feather touch keypad
- Brief Pulse mode

Additional features available in PC ECTON

- EEG, ECG and EMG monitoring
- Session wise records are saved for each patient
- View / Edit / Delete any session at any time
- Search facility for Patient's Database
- Automatic Calculation of Convulsion
- Heart Rate Variability
- Event Marking
- Automatic Report Generation
- Time Measurement Tool
- Peak to Peak Measurement Tool
- Heart Rate Measurement Tool
- Selectable Filters, Sensitivity, Deflection and Channel Color
- Raster & Continuous Viewing of Waveforms



PC ECTON



ECT- Technical Specifications

ECTON

BRIEF PULSE MODE

Frequency, Duration, Pulse Width, Current Selectable by user. Energy Automatically Calculated by the micro computer

Type	Bidirectional square wave
Frequency	Selectable 10Hz - 140Hz in 15 steps of 10Hz each
Pulse Width	Selectable 0.10 mS - 2.0 mS in 20 steps of 0.1mS each
Duration	Selectable from 0.10 Secs to 5 Secs in 50 steps of 0.10 secs each.
Current	500 mA - 800 mA in 7 steps of 50 mA each.
Energy	Energy is delivered according to the head Impedance.

PC ECTON

No. of Channels	3 Channels (EEG, ECG & EMG)
CMRR	>90 dB
A/D Resolution	12 Bits Unipolar
Low-Pass Fq. (Hz)	DC, 0.1, 0.3, 0.5, 1, 3, 5, 7
High-Pass Fq. (Hz)	0.1, 0.3, 0.5, 2, 5, 10, 15, 35, 70, 99
Sensitivity (μ V)	1, 2, 3, 5, 7.5, 10, 15, 20, 30, 50, 75, 100, 200, 300, 500, 750, 1000, 1500
Sampling Rate	256
Interface	RS-232

COMPUTER CONFIGURATION

OS: Windows XP Pro/Windows7 Professional 32bit, Processor: Core2Duo or higher, RAM: 2GB or higher, 40 GB harddisk, CD/DVD Optical Drive, Screen Resolution 1024x768 or higher

STANDARD ACCESSORIES

Component	Quantity
Head Band	1 No.
Conductive Jelly	1 Bottle
Earthing Cord	1 No.
Dust Cover	1 No.
Instruction Manual	1 No.

Remote Service Program

Online technical support is available from RMS Head Office. Customer has to provide internet connection.

Since R&D is a continuous process, to make changes in product features, specifications, aesthetics and/or to discontinue the same at any time without notice or obligation



Certified ISO 9001:2015, EN ISO 13485:2016 company



Recorders & Medicare Systems (P) Ltd.

Plot No. 11, HSIIDC IT Park, Sector 22, Panchkula - 134114, Haryana, India
Ph.: +91-172-2564196, 2565196, Toll Free: 1800-1200-767,
www.rmsindia.com, sales@rmsindia.com

Unit II: Plot No. 9, Industrial Area, Phase 1, Panchkula - 134113, Haryana, India